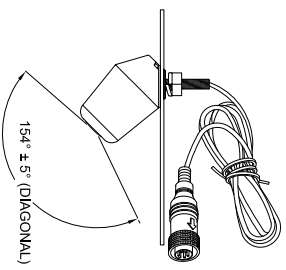
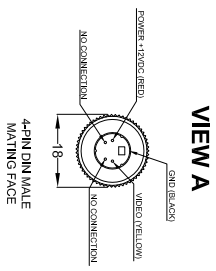
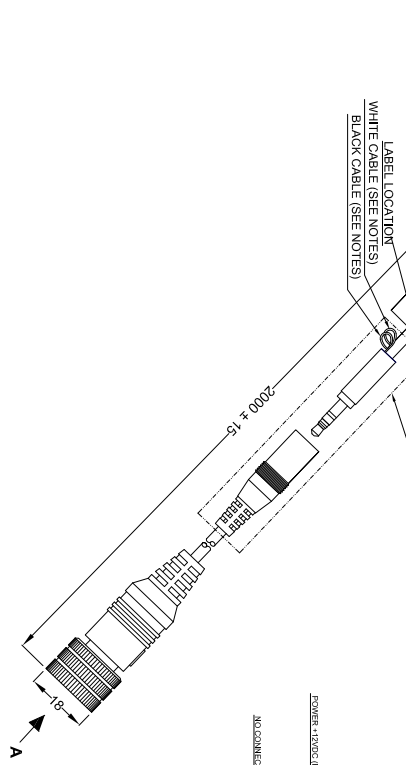
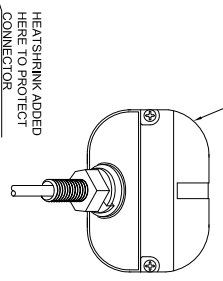
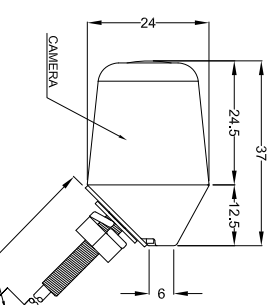
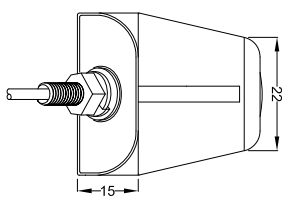
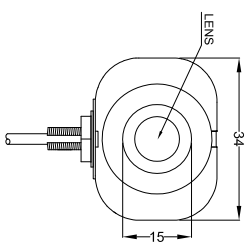
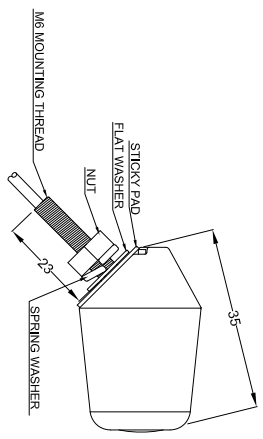
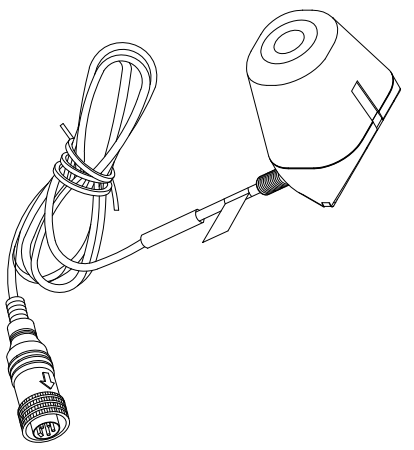
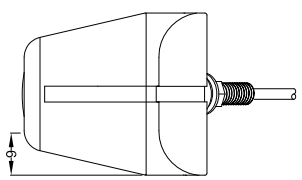


MODEL NO.	STOCK CODE	VARIANTS
BE-500VC	(#2828B)	VERTICAL MOUNT CAMERA
BE-500HC	(#2826B)	HORIZONTAL MOUNT CAMERA

HORIZONTAL MOUNT



154° ± 5° (DIAGONAL)



NOTES:
 DIMENSIONS IN MM
 FINISH IS BLACK
 BASE MATERIAL IS CAST ZINC
 CUT GREEN OR WHITE CABLE FOR NORMAL IMAGE
 MINIMUM VERTICAL MOUNTING HEIGHT TO COVER CLASS VI AREA IS 1.8M
 REFER TO "PRODUCT SPECIFICATION" FOR MORE DETAILS

PROPRIETARY NOTICE
 THIS DESIGN AND TECHNICAL INFORMATION APPEARING ON THIS DRAWING IS THE PROPERTY OF BRIGADE ELECTRONICS PLC, AND IS DISCLOSED IN CONFIDENCE. IT IS NOT TO BE COPIED, REPRODUCED, REVEALED TO OR APPROPRIATE BY OTHERS, EITHER IN WHOLE OR IN PART WITHOUT THE EXPRESS WRITTEN CONSENT OF BRIGADE ELECTRONICS PLC.

Rev/No	Revision note	Date	Signature	Checked
1	CONNECTOR CHANGED FROM MOLEX TO JACK PLUG	28/09/09	SM	DK

Item#	Quantity	Title/Name, designation, material, dimension etc	Article No./Reference
1	1	CONNECTOR CHANGED FROM MOLEX TO JACK PLUG	28/09/09

Designed by	Checked by	Approved by - date	Filename	Date	Article No./Reference	Scale
MOUTLER	DKERA	SMATTERS		03/07/09		N/A
BRIGADE ELECTRONICS				BE-500HC (#2826B)		
				BE-000845-01-09		
				A		
				1/1		